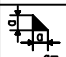
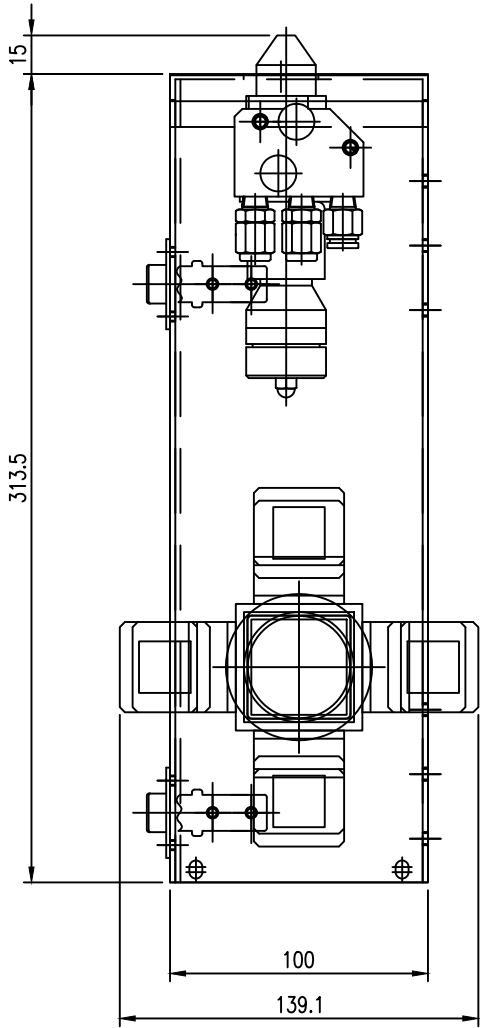
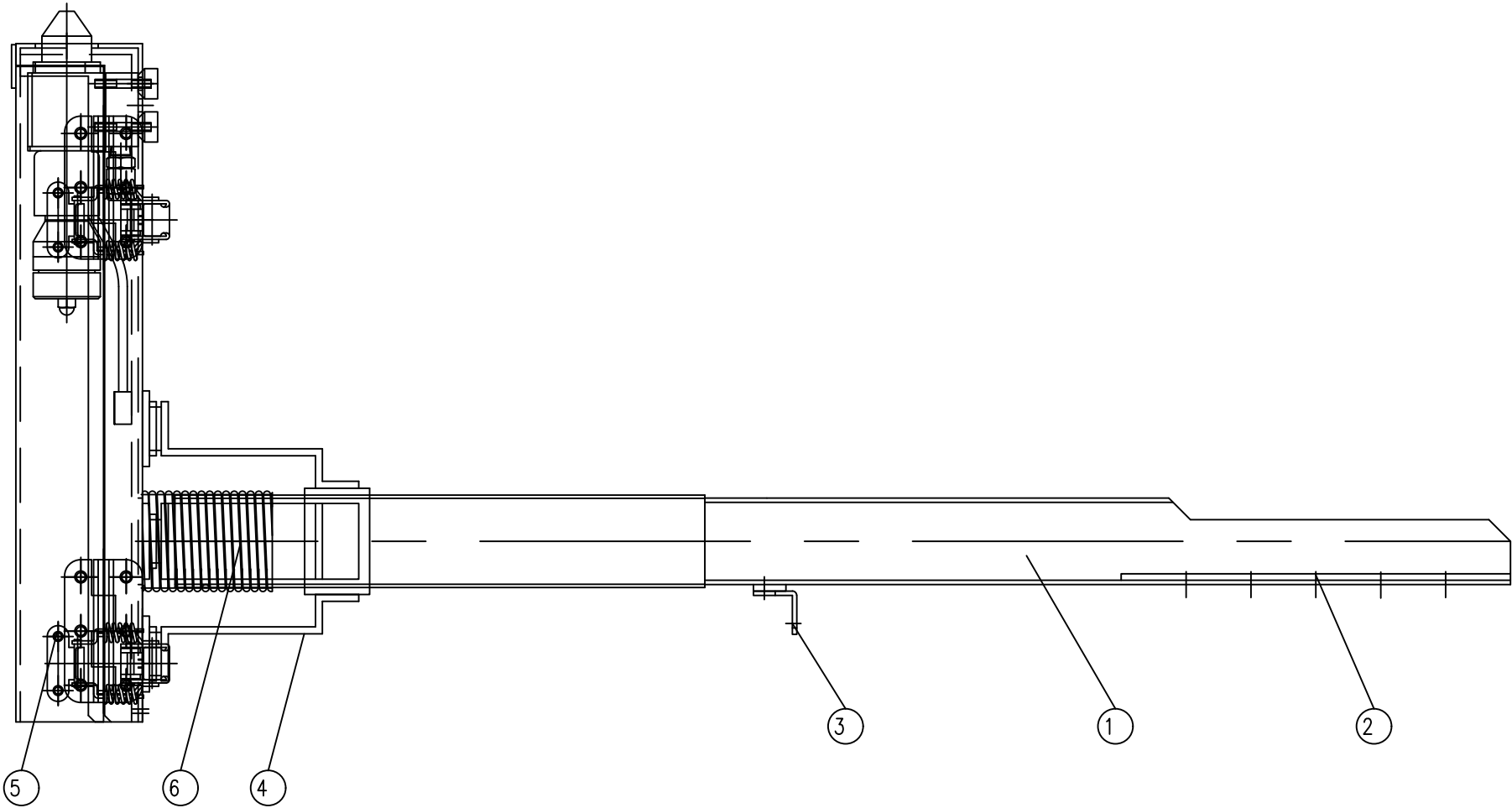
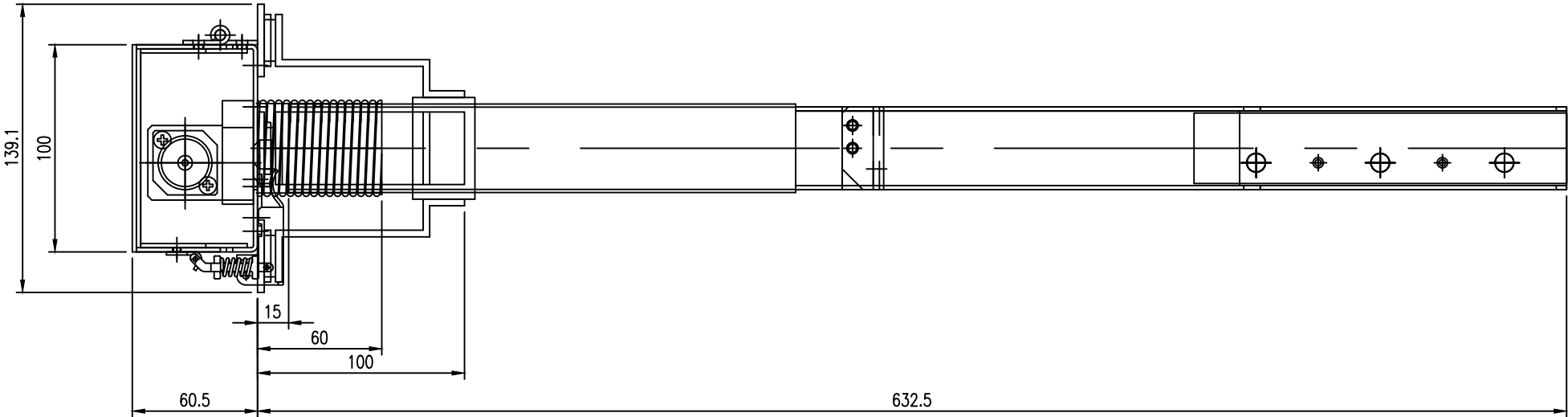



지시의 용법치수		지시의 모서리부분 지시의 일반 모서리 제기 C = 0.3~0.8 R = 0.3~0.8	지시의 일반치수 허용차 (KSB ISO 2768-1)									표면 거칠기 (KSB 0161 , 0507 , 0617)											
	g=		필삭 가공	구 분	0.5 ~ 6	6 ~ 30	30 ~ 120	120 ~ 400	400 ~ 1000	1000 ~ 2000	2000 ~ 4000	Ra	▽	0.1	0.2	0.4	0.8	1.6	3.2	6.3	12.5	25	
		공차단위	±0.1	±0.2	±0.3	±0.5	±0.8	±1.2	±2.0	Rmax	다듬질	0.4S	0.8S	1.6S	3.2S	6.3S	12.5S	25S	50S	100S			



NO.	DESCRIPTION	MAT(KS)	UNIT	QUANTITY		WEIGHT(KG)		REMARK'S
				UNIT	TOTAL	UNIT	TOTAL	
1	NOZZLE ARM				1			
2	SPACE PLATE				1			
3	고정 BRACKET				1			
4	MAGNET 고정 HOLDER				4			
5	NOZZLE CASE				1			
6	SPRING				1			
P1	NOZZLE				1			

NIRECO KOREA										SCALE	1/3	PROJECTION	
										SIZE	A3	DIMENSION	mm
TITLE		PLANT		SPRAY PAINT MARKER						EQUIPMENT		MARKING MACHINE	
		MARKING	FACILITY	NOZZLE ARM ASSEMBLY									
CUSTOMER	DRAWN	CHECKED	REVIEWED	APPROVED	SUPPLIER DWG. NO.	DRAWN	CHECKED	REVIEWED	APPROVED	SUPPLIER DWG. NO.	NIK-NZ-ARM-000		
	SIGNATURE						LMJ	LMJ	HSW				JSH
	DATE						2022/02/28	03/02	03/04				03/07